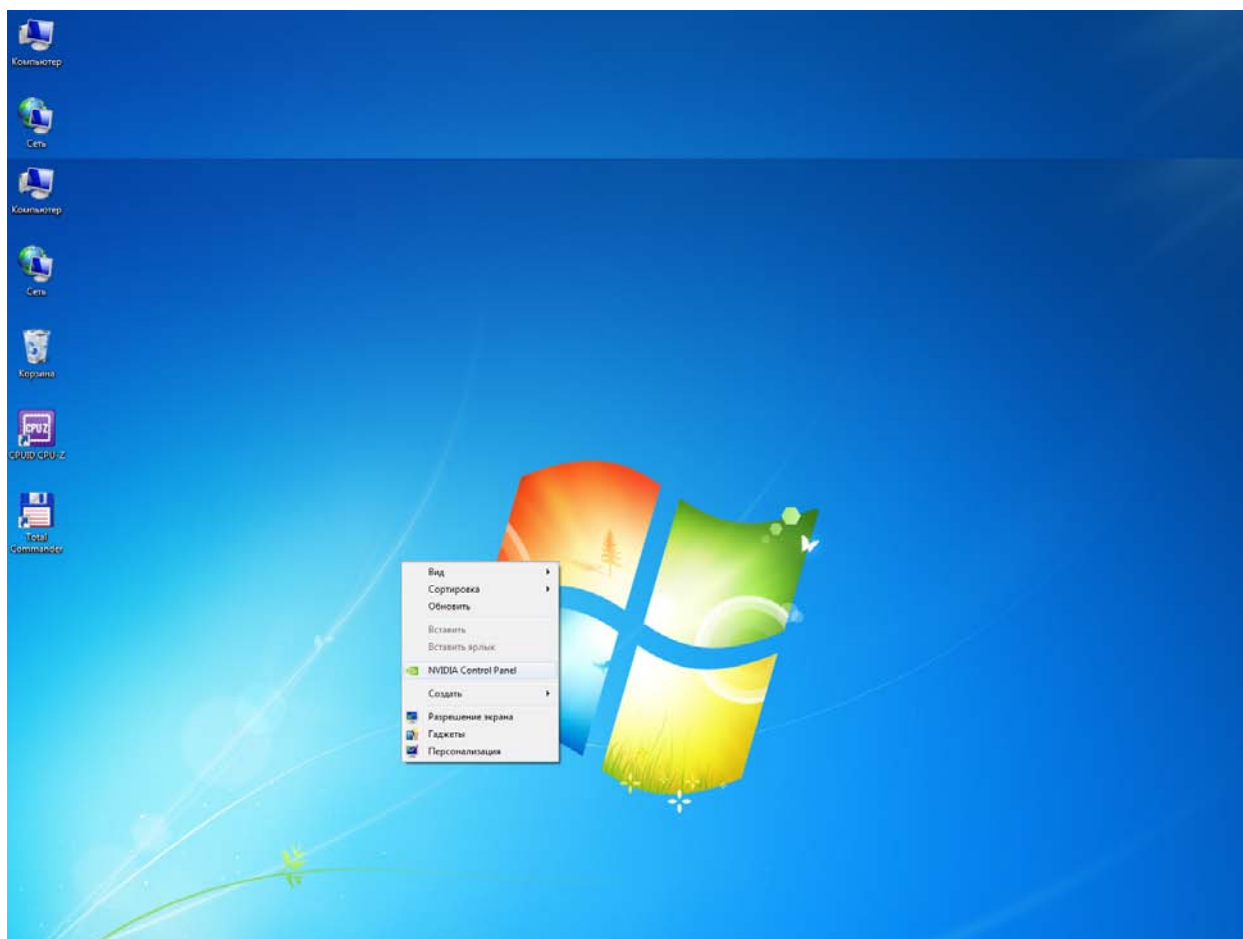
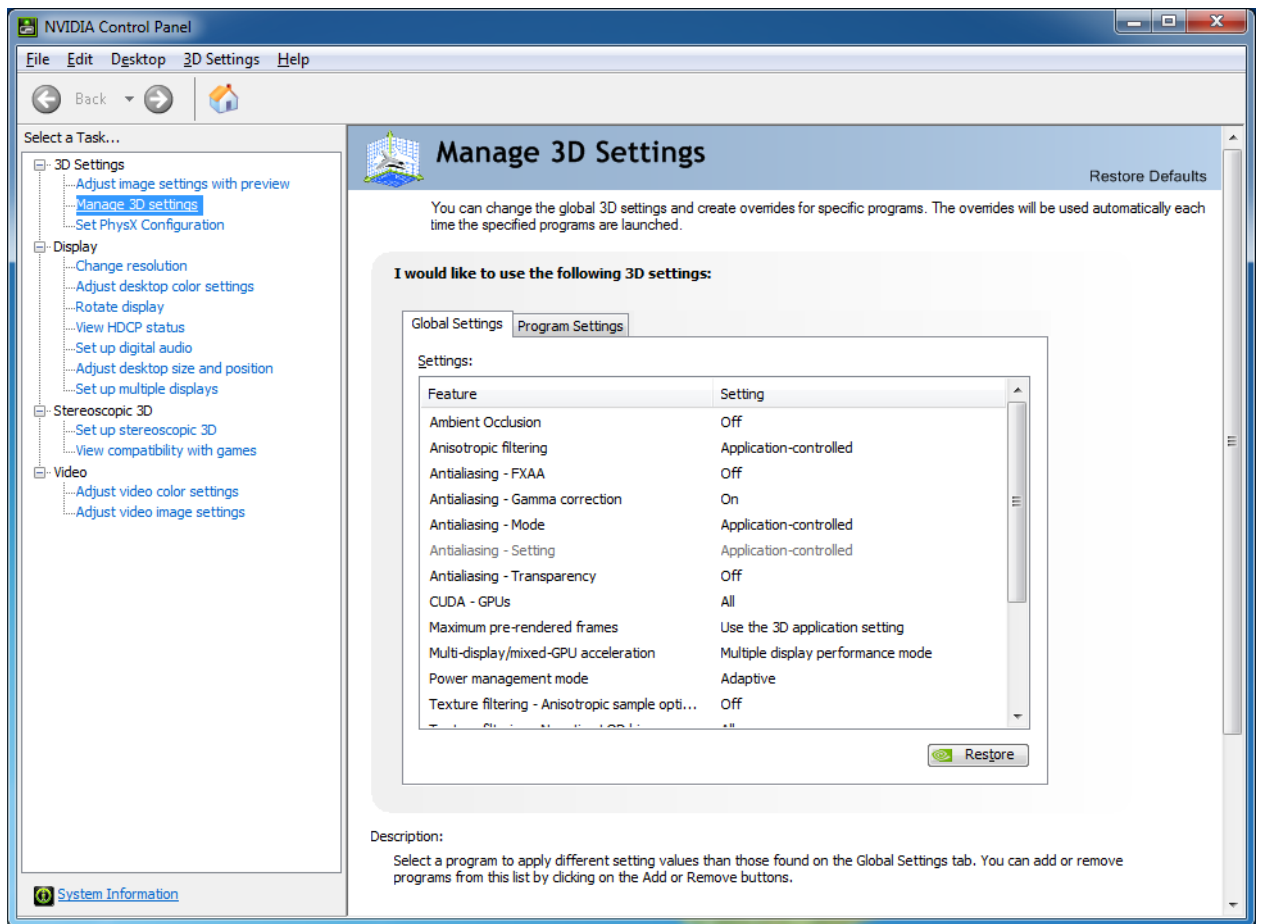


Настройка драйвера NVIDIA

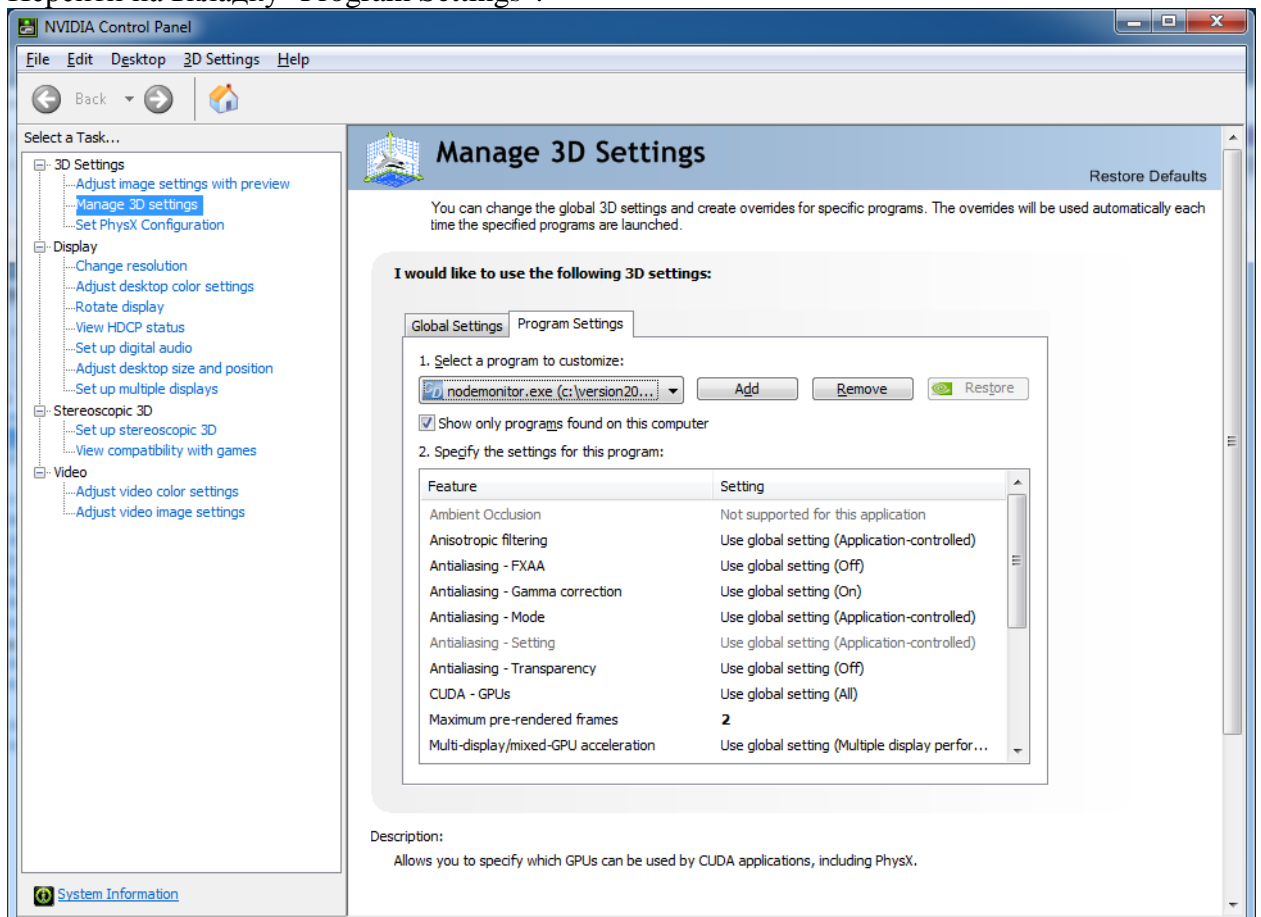
Открыть панель управления драйвером NVIDIA:



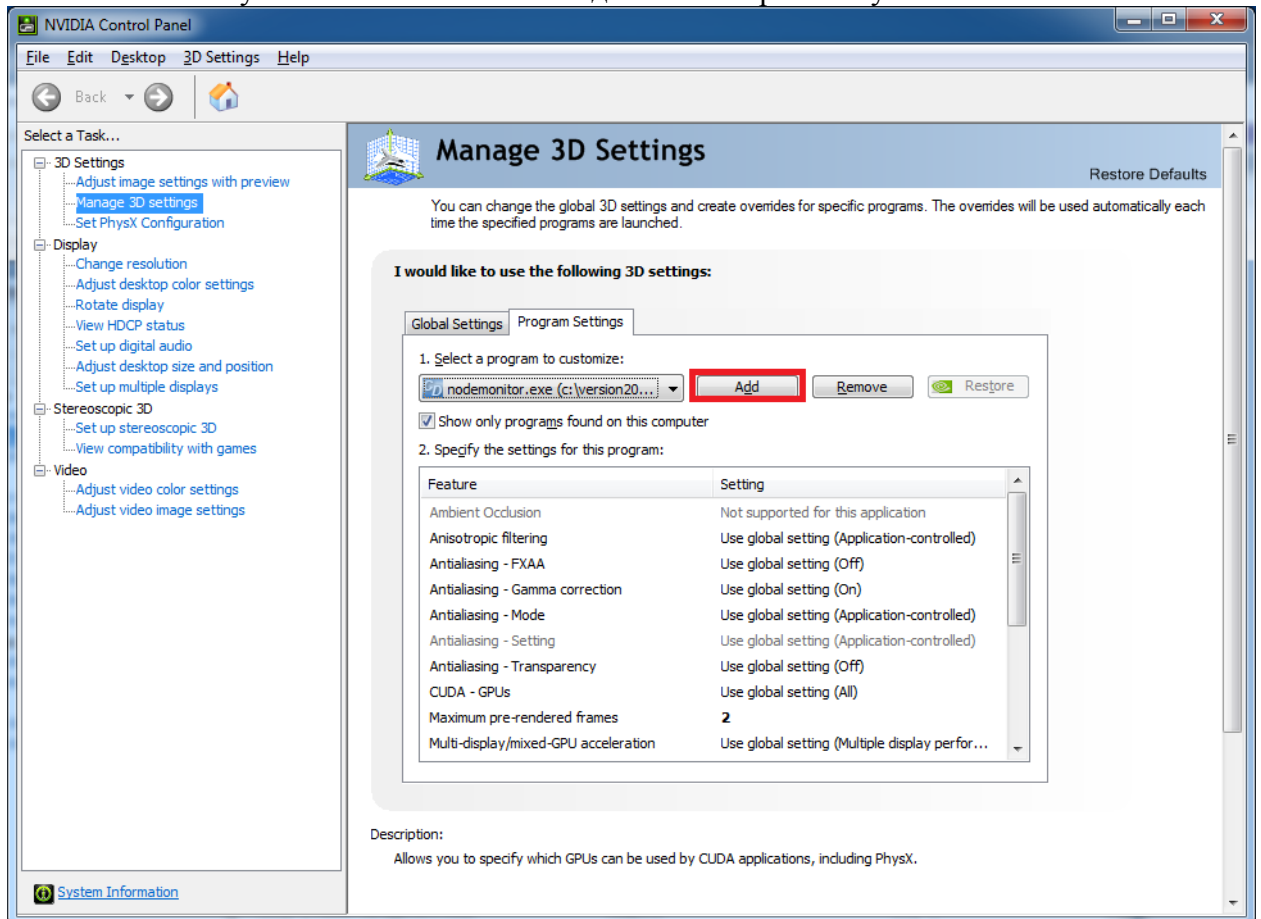
Нажать на "Manage 3D settings":



Перейти на вкладку "Program Settings":



Нажать на кнопку "Add" и в появившемся диалоге выбрать запускаемый NodeMonitor:



Далее необходимо выставить следующие настройки:

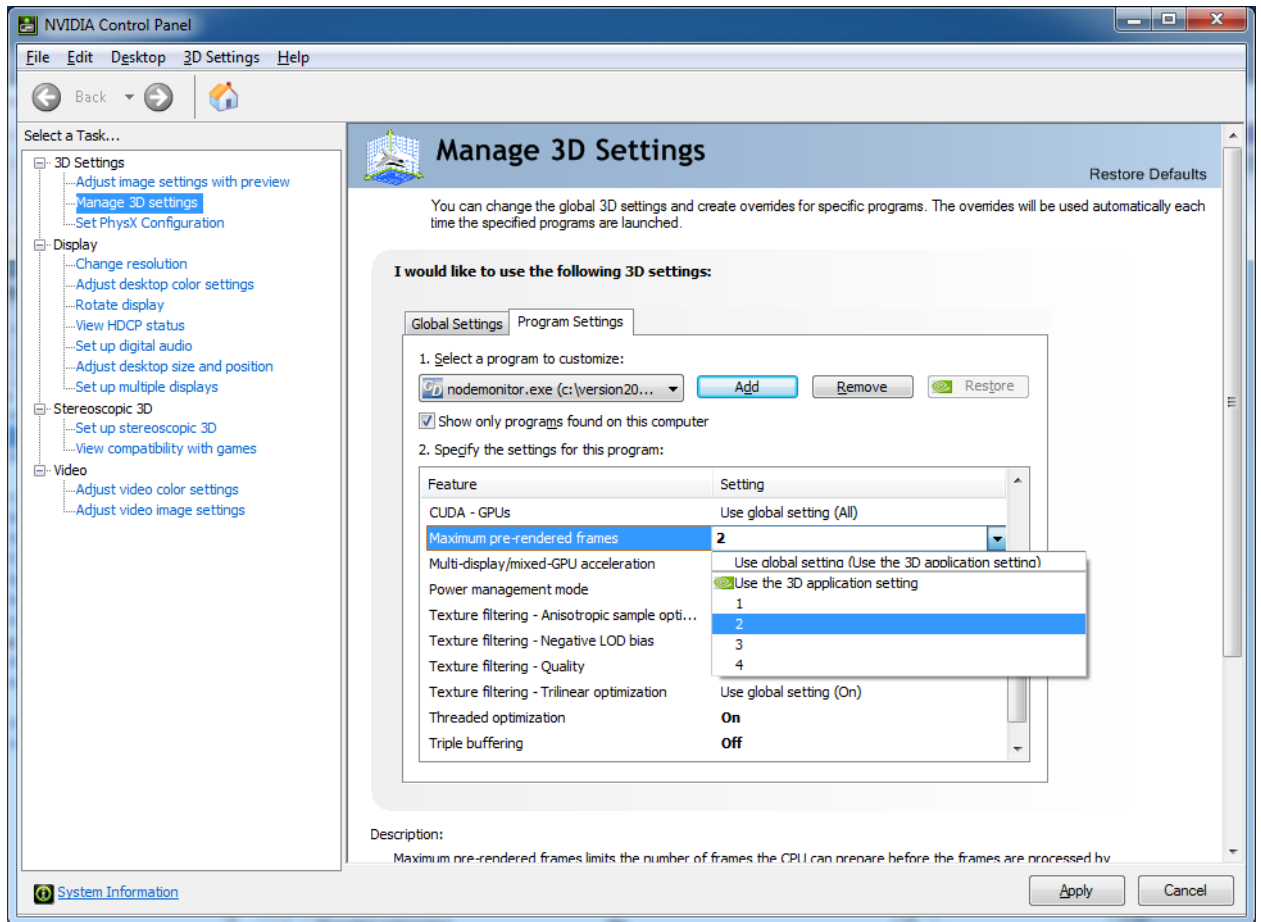
Maximum pre-rendered frames: 2

Power management mode: Prefer maximum performance

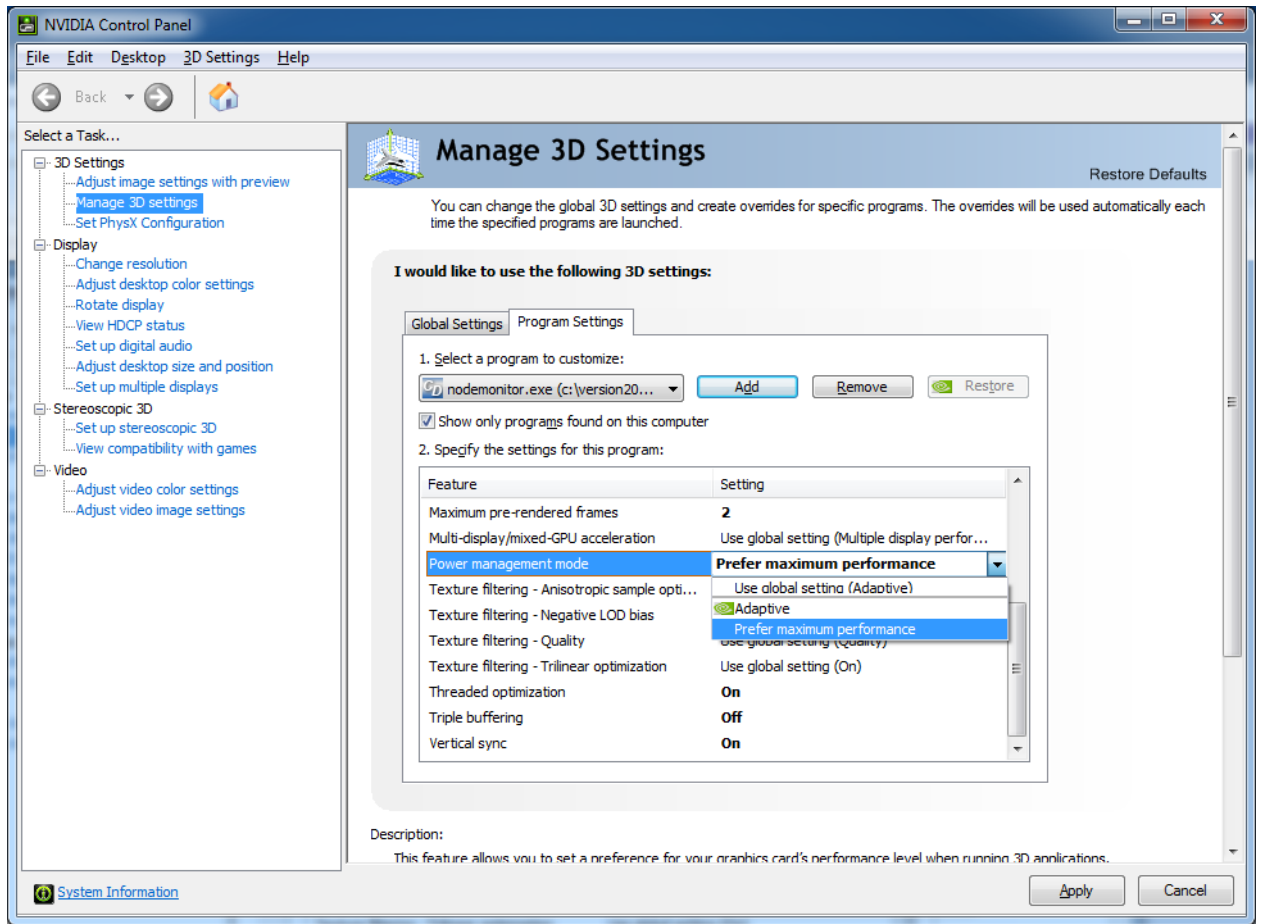
Threaded optimization: On

Triple buffering: Off

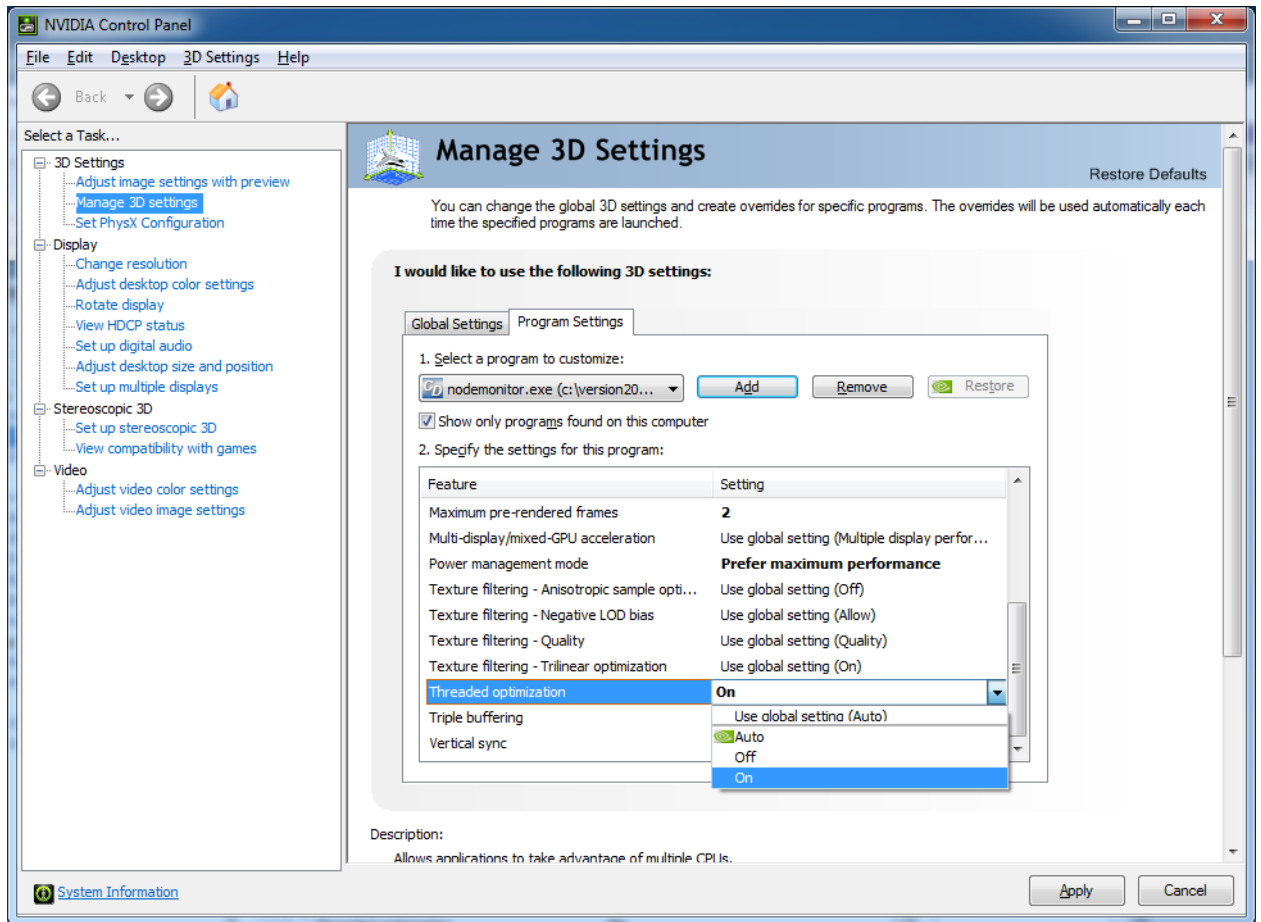
Vertical sync: On



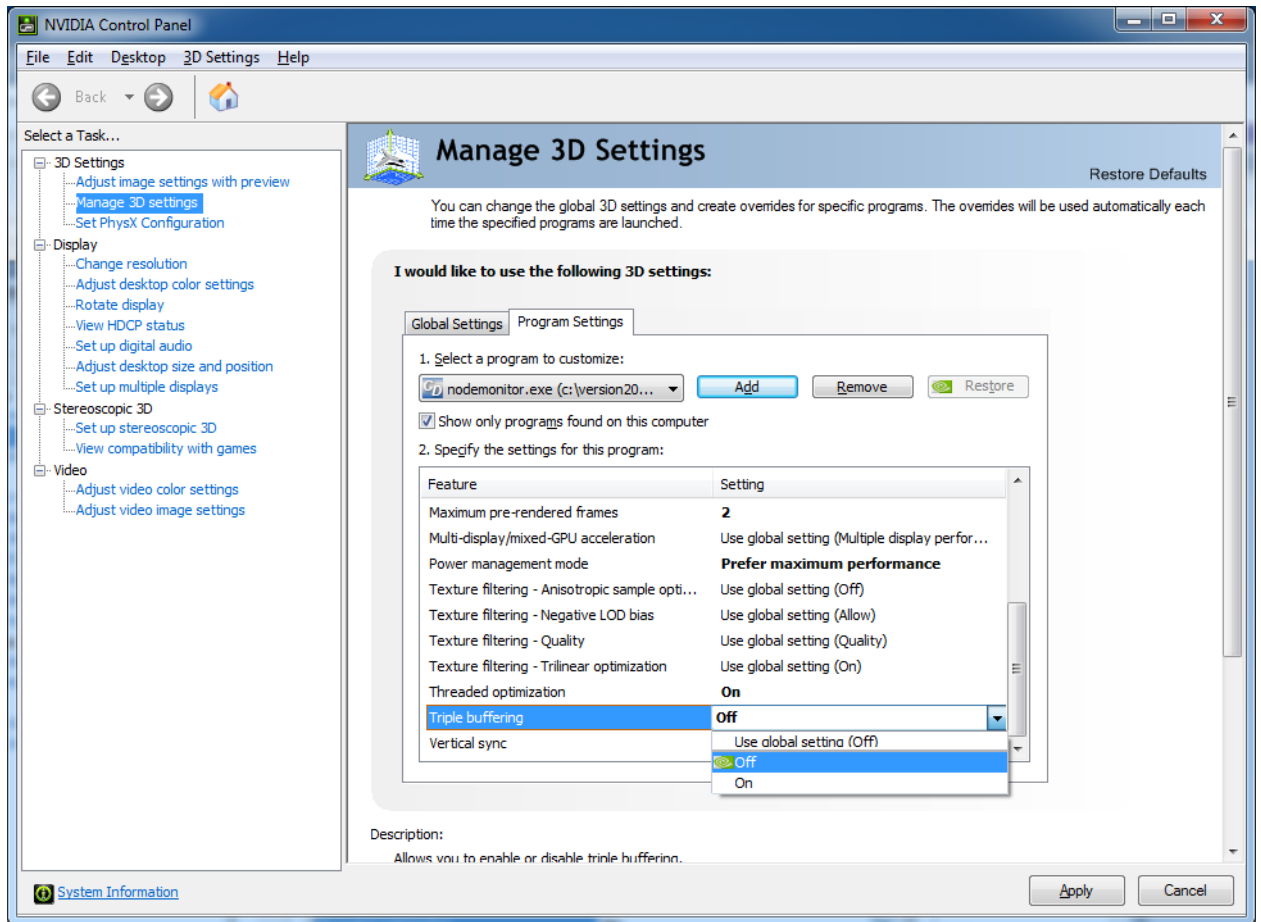
Maximum pre-rendered frames: 2



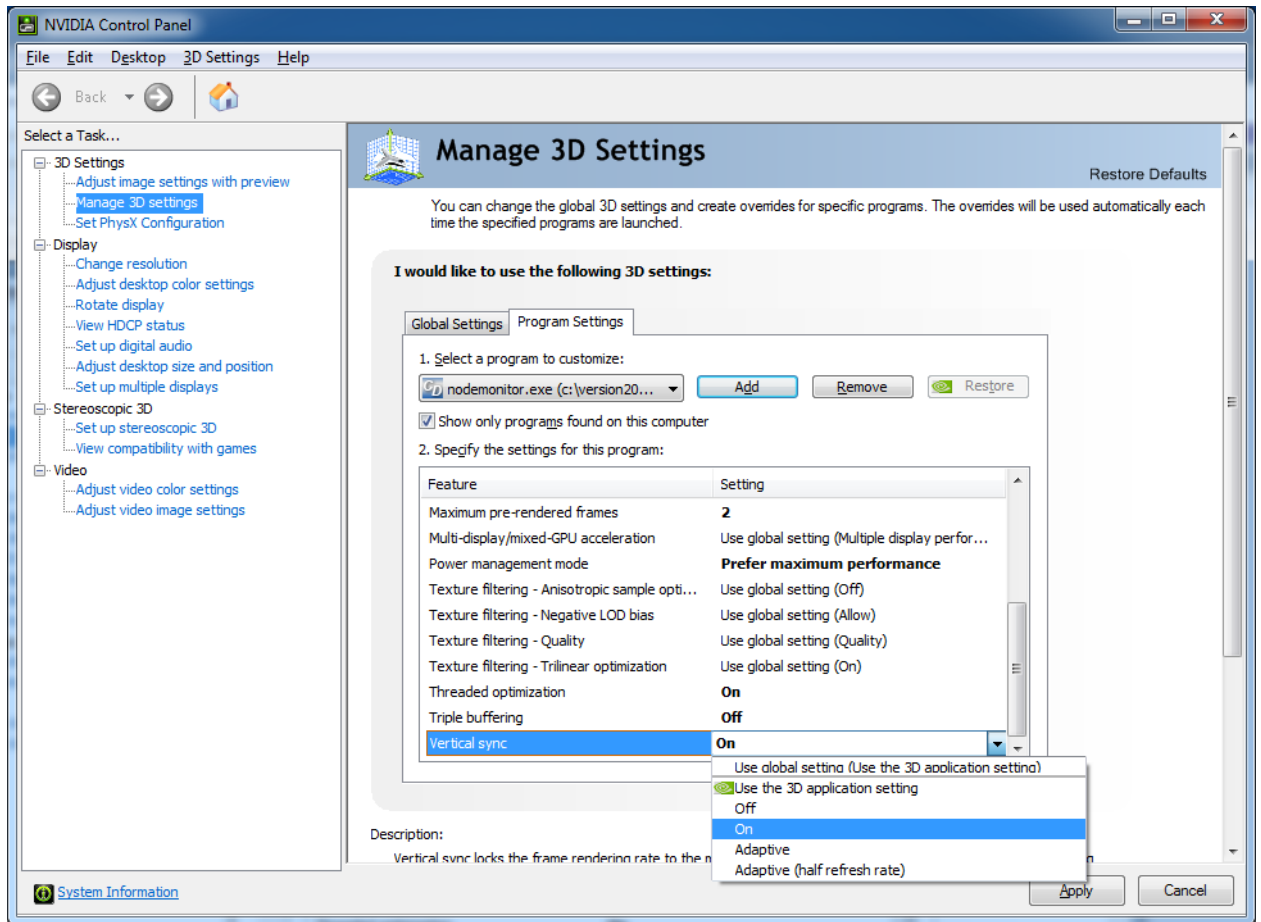
Power management mode: Prefer maximum performance



Threaded optimization: On



Triple buffering: Off



Vertical sync: On